

Connecticut

\$855 million and Growing

Environmental Horticulture is *Many* Types of Businesses



69% Landscape Services



42% Retail Sales



21% Wholesale Production, Sales



19% Other Sales, Services

Environmental Horticulture - a Major Sector of Agriculture in Connecticut

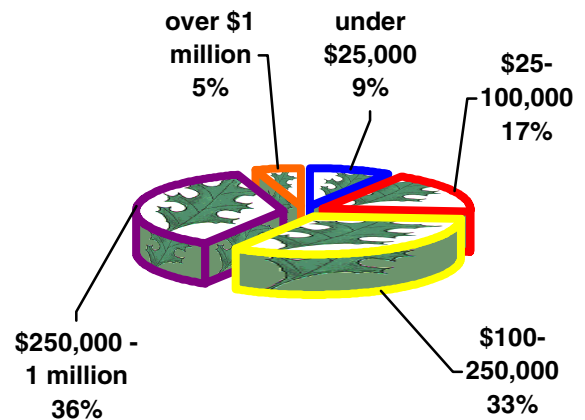
Over 1,500 firms are in this industry.

These firms include:

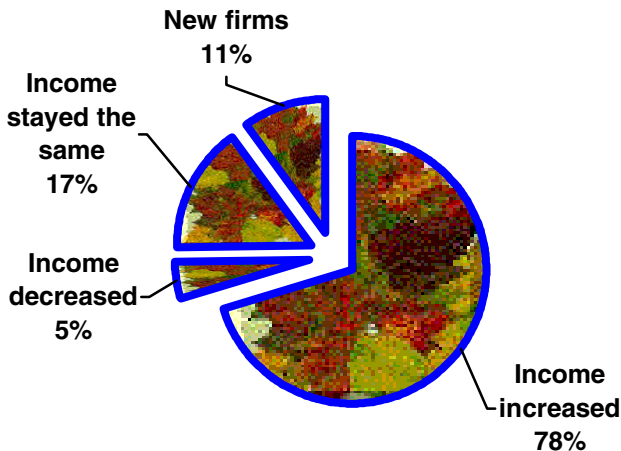
- ✿ **production:** nurseries, greenhouses, herbs, cut flowers, turfgrass
- ✿ **retail:** garden centers, florists
- ✿ **landscape services:** landscape design, installation, maintenance; lawn care; tree care

Most firms are involved in more than one of these activities.

Firm distribution by income



Percent of firms



The Environmental Horticulture Industry is Growing!

Between 1993 and 1998, income grew by \$222 million.

- Over 1,200 firms increased their incomes, an average 72% per firm.
- More than 140 new firms were started during the past five years.

The Environmental Horticulture Industry Produces Plants

Plant production generated \$256 million.

The estimated \$513 million in plant sales include:



\$164 million from plants produced totally by the seller

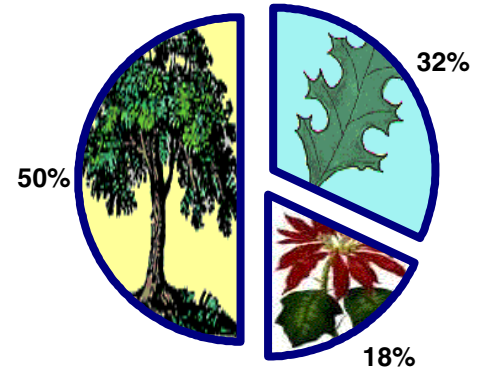


\$92 million from young plants ("pre-finished") and grown further prior to selling



\$257 million from "finished" plants bought for resale, either wholesale or retail

Plant Producers



Environmental Horticulture Provides Employment

At least 25,500 have careers in this industry. An additional 5,400 employees are needed.

- **8,400 new jobs** were created over the past five years.
- This industry paid **\$423 million towards employees** in 1998.
- An **average 80% more was spent on labor** than in 1993, by almost two-thirds of the businesses.

Full-time, 61%



Part-time, 11%



Seasonal, 28%



More facts on Environmental Horticulture in Connecticut



The majority of income (89%) came from sales and services within the state.



This industry paid **\$81 million in taxes**. Over half the firms paid an average 87% more than in 1993.



This industry is keeping **over 21,600 acres in agriculture**, over 9,900 of which is open space.

