

Rhode Island

\$279 million and Growing

Environmental Horticulture is *Many* Types of Businesses



58% Landscape Services



42% Retail Sales



39% Wholesale Production, Sales



12% Other Sales, Services

Environmental Horticulture - a Major Sector of Agriculture in Rhode Island

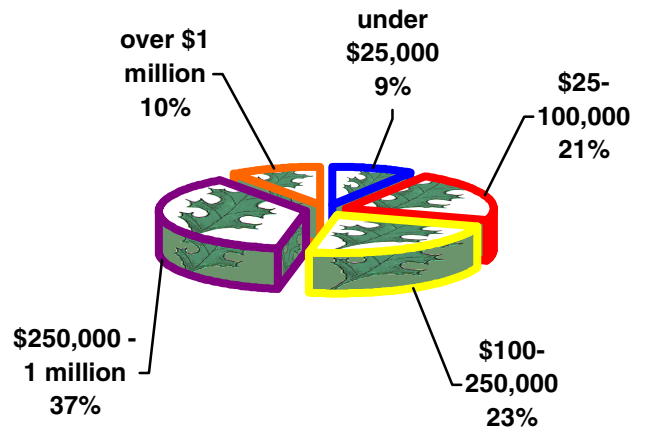
Over 540 firms are in this industry.

These firms include:

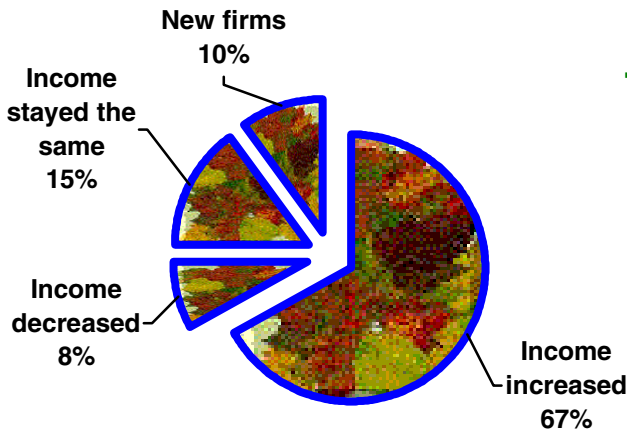
- ✿ **production:** nurseries, greenhouses, herbs, cut flowers, turfgrass
- ✿ **retail:** garden centers, florists
- ✿ **landscape services:** landscape design, installation, maintenance; lawn care; tree care

Most firms are involved in more than one of these activities.

Firm distribution by income



Percent of firms



The Environmental Horticulture Industry is Growing!

Between 1993 and 1998, income grew by \$72 million.

- ❑ Over 360 firms increased their incomes, an average 76% per firm.
- ❑ More than 50 new firms were started during the past five years.

The Environmental Horticulture Industry Produces Plants

Plant production generated \$140 million.

The estimated \$209 million in plant sales include:



\$117 million from plants produced totally by the seller

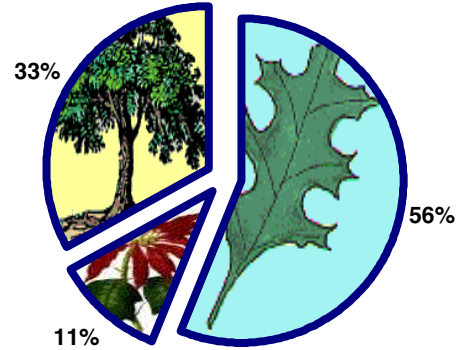


\$23 million from young plants ("pre-finished") and grown further prior to selling



\$69 million from "finished" plants bought for resale, either wholesale or retail

Plant Producers



Environmental Horticulture Provides Employment

At least 8,400 have careers in this industry. An additional 2,400 employees are needed.

- **2,700 new jobs** were created over the past five years.
- This industry paid **\$153 million towards employees** in 1998.
- An **average 98% more was spent on labor** than in 1993, by over half of the businesses.

Full-time, 54%



Part-time, 10%



Seasonal, 36%



More facts on Environmental Horticulture in Rhode Island



The majority of income (76%) came from sales and services within the state.



This industry paid **\$20 million in taxes**. Over half the firms paid an average 39% more than in 1993.



This industry is keeping **over 21,700 acres in agriculture**, over 5,200 of which is open space.